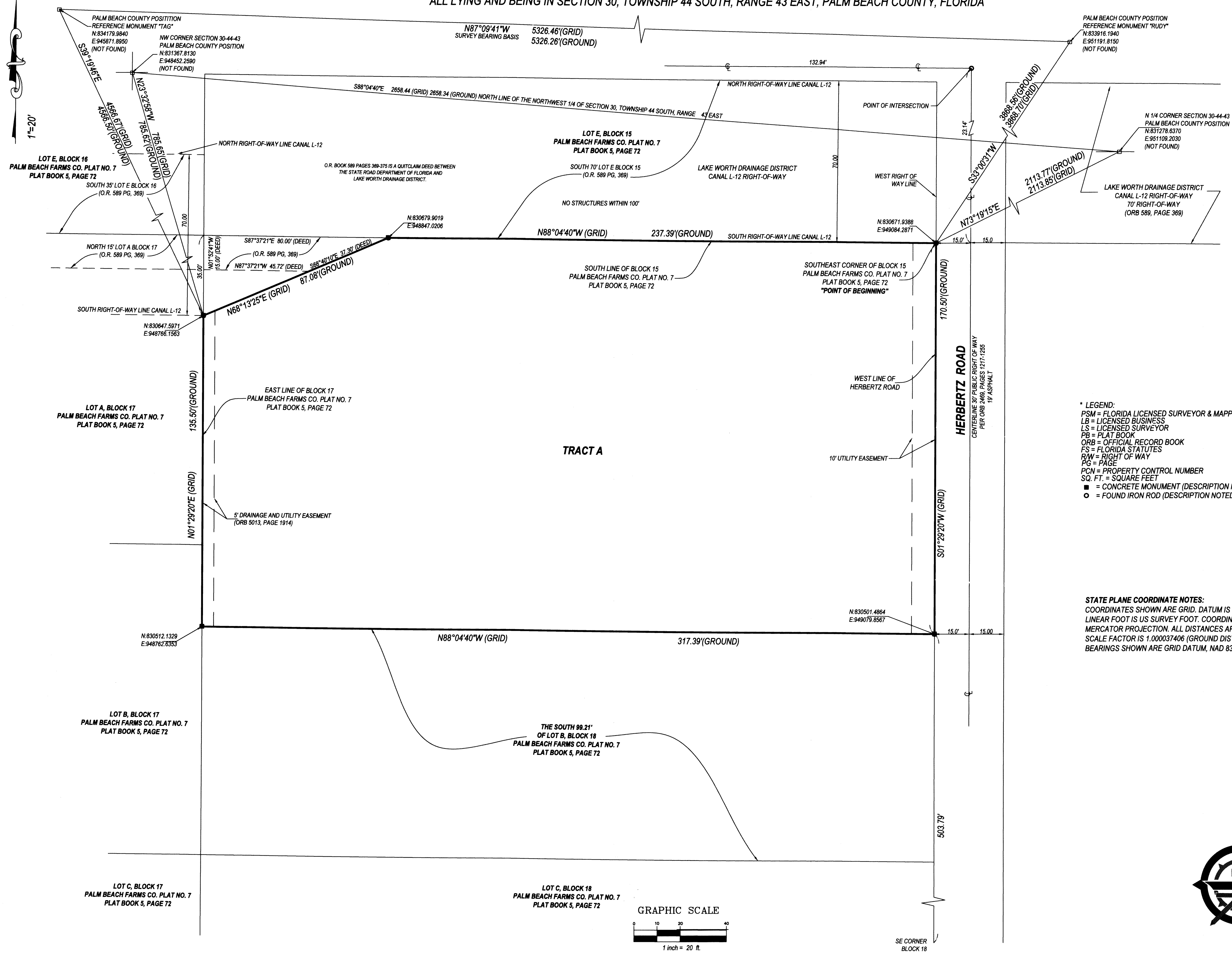


HERBERTZ ROAD APARTMENTS

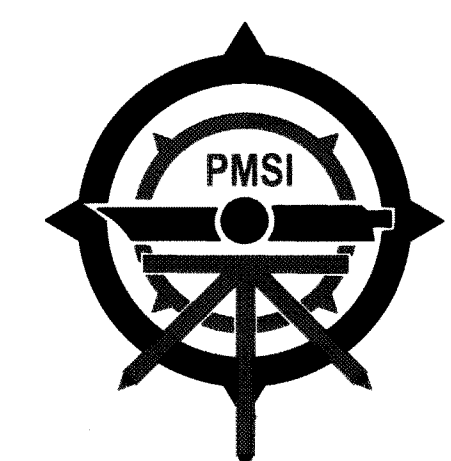
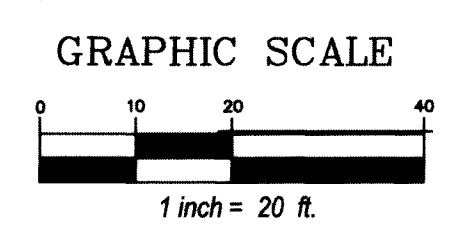
BEING A PORTION OF LOTS A AND B, BLOCK 18, THE PALM BEACH FARMS COMPANY, PLAT NO. 7, OF SEC. 30, T. 44 S., R. 43 E., PALM BEACH COUNTY, FLORIDA
 ACCORDING TO THE PLAT THEREOF, AS RECORDED IN PLAT BOOK 5, PAGE 72. OF THE PUBLIC RECORDS OF PALM BEACH COUNTY, FLORIDA,
 ALL LYING AND BEING IN SECTION 30, TOWNSHIP 44 SOUTH, RANGE 43 EAST, PALM BEACH COUNTY, FLORIDA

193



- * LEGEND:**
- PSM = FLORIDA LICENSED SURVEYOR & MAPPER
 - LB = LICENSED BUSINESS
 - LS = LICENSED SURVEYOR
 - PB = PLAT BOOK
 - ORB = OFFICIAL RECORD BOOK
 - FS = FLORIDA STATUTES
 - RAW = RIGHT OF WAY
 - PG = PAGE
 - PCN = PROPERTY CONTROL NUMBER
 - SQ. FT. = SQUARE FEET
 - = CONCRETE MONUMENT (DESCRIPTION NOTED)
 - = FOUND IRON ROD (DESCRIPTION NOTED)
- P.O.A. = PROPERTY OWNERS ASSOCIATION
 - P.U.D. = PLANNED UNIT DEVELOPMENT
 - P.I.D. = PLANNED INDUSTRIAL DEVELOPMENT
 - M.U.P.D. = MULTIPLE USE PLANNED DEVELOPMENT
 - LLC = LIMITED LIABILITY COMPANY
 - R = RADIUS
 - L = ARC LENGTH
 - Δ = DELTA
 - PRM = PERMANENT REFERENCE MONUMENT

STATE PLANE COORDINATE NOTES:
 COORDINATES SHOWN ARE GRID. DATUM IS NAD 83, 1990 ADJUSTMENT. ZONE IS FLORIDA EAST.
 LINEAR FOOT IS US SURVEY FOOT. COORDINATE SYSTEM IS 1983 STATE PLANE TRANSVERSE
 MERCATOR PROJECTION. ALL DISTANCES ARE GROUND (UNLESS OTHERWISE NOTED).
 SCALE FACTOR IS 1.000037406 (GROUND DISTANCE TIMES SCALE FACTOR IS GRID DISTANCE.)
 BEARINGS SHOWN ARE GRID DATUM, NAD 83, 1990 ADJUSTMENT, FLORIDA EAST ZONE.



PRINCIPAL MERIDIAN SURVEYING INC.
 4546 CAMBRIDGE STREET
 WEST PALM BEACH, FL 33415
 PHONE 833.478.7764 / FAX 561.478.1094
 WWW.PMSURVEYING.NET
 JOB # 08050267